



# USER FRIENDLY ECONOMICAL JET DYEING MACHINE



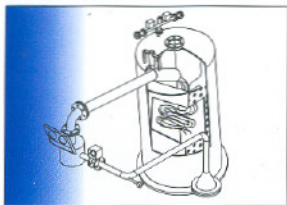
Patented

- 27 International & National Awards.
- 5 Export Awards for remarkable exports in 20 countries.



**DEVREKHA**

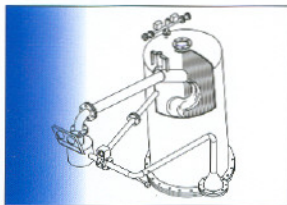
**ECONOMICAL JET DYEING  
(With Basket)**



**Exclusive Features**

- CAPACITY : 200 - 250 Kg. (Single Tube)
- LIQUOR RATIO - 1:1 (Wet Fabrics)
- DYE 30 To 400 Grms./Mtr. Sq. FABRICS (Woven & Knitted Fabrics)
- HIGH TEMP. - UP TO 140° C.
- FABRIC SPEED - 300 Mtrs./Min.

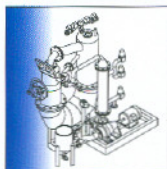
**SUPER ECONOMICAL  
JET DYEING (With TeFlon Rod)**



**Exclusive Features**

- CAPACITY : 300 - 400 Kg. (Single Tube)
- LIQUOR RATIO - 1:1 (Wet Fabrics)
- DYE - 30 To 400 Grms./Mtr. Sq. FABRICS (Woven & Knitted Fabrics)
- HIGH TEMP. - UP TO 140° C.
- FABRIC SPEED - 300 Mtrs./Min.
- LOOP LENGTH - UP TO 3000 Mtrs.

**SAMPLE JET MACHINE**



**Exclusive Features**

- CAPACITY : 10, 25 & 50 Kg. (Single Tube)
- LIQUOR RATIO - 1:1 (Wet Fabrics)
- DYE - 30 To 450 Grms./Mtr. Sq. FABRICS (Woven & Knitted Fabrics)
- HIGH TEMP. - UP TO 140° C.
- FABRIC SPEED - 300 Mtrs./Min.

**DIMENSION DIAGRAM**



**Faster return on investments - Within 1 year - Compare to conventional technology.**

**DEVREKHA**



A-2, B/102, G.I.D.C. Sachin, Surat - 394230, Gujarat, INDIA.  
Tel.: +91-261-2398831,82. Fax.: +91-261-2398833.  
E-mail: info@devrekha.com, postmaster@devrekha.com  
Website: www.devrekha.com